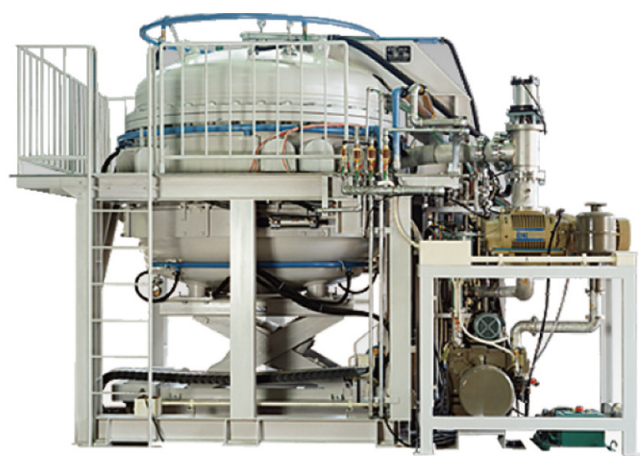


# Pressure sintering furnace (CMO)

The Pressure Sintering Furnace (CMO) is a pressurized atmosphere furnace that sinters oxide ceramics etc. to produce sintering at high density.



## features

- Pressure is controllable in the range of vacuum to pressurized atmosphere.
- Uniform heating is assured under pressurized atmosphere.
- Can be used under a variety of atmosphere conditions (oxidizing, inert or reducing atmosphere).

## [Specifications]

Operating temperature	1650°C during normal operation, 1700°C at maximum
Atmosphere	O <sub>2</sub> , N <sub>2</sub> , Ar, H <sub>2</sub> , Vac
Effective internal dimensions of furnace	φ1600×350H
Temperature uniformity	±10°C (at 1650°C within the effective dimensions)
Time required for heating	6 hours
Heater	MoSi <sub>2</sub>
Ultimate vacuum	1.33×10 <sup>-4</sup> Pa (10 <sup>-3</sup> Torr) With no charge
Pressure	0.9MPa (9kg/cm <sup>2</sup> )
Power requirements	3φ 200V 150KVA