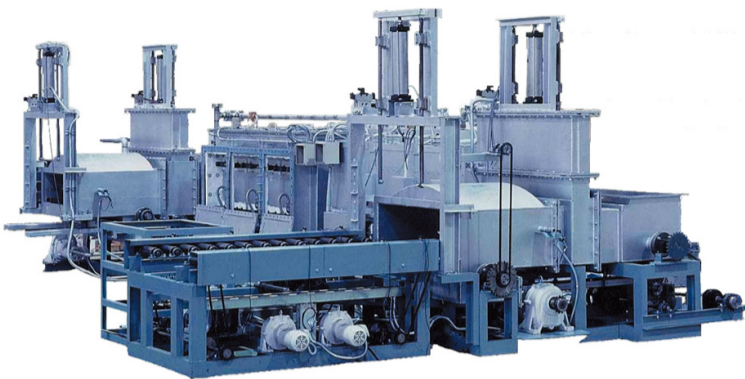


Pusher furnace(PF)

This pusher furnace equipped with a tray batch-assisted automatic transportation unit is suited to unmanned continuous operation for removal of binding material and for sintering.



features

- Is suitable for treatment for mass production.
- Carries out sintering at high temperatures in various types of atmosphere.
- Attains unmanned continuous operation.
- Can be connected to return table, stock table, work loading/unloading units.

【Specifications (as an example)】

Specifications/ Furnace Model	Furnace for removal of binding material	Furnace for sintering
Objective	Removal of binding material and preliminary sintering	Sintering
Material to be treated	Oxide ceramics	Oxide ceramics
Capacity	3.75kg/Hr	10.2kg/Hr
Temperature	Max.1,000℃ Nor. 700℃	Max. 1,500℃ Nor. 1,400℃
Atmosphere	Atmospheric air	Atmospheric air
Temperature control	6 zones	6 zones
Heater capacity	60KW	150KW
Heater	Fe-Cr-Ni metal heating element	MoSi2
Internal dimensions of furnace	300W×140H×7,580D	300W×130H×7,500D

※Atmosphere furnaces can be also manufactured.